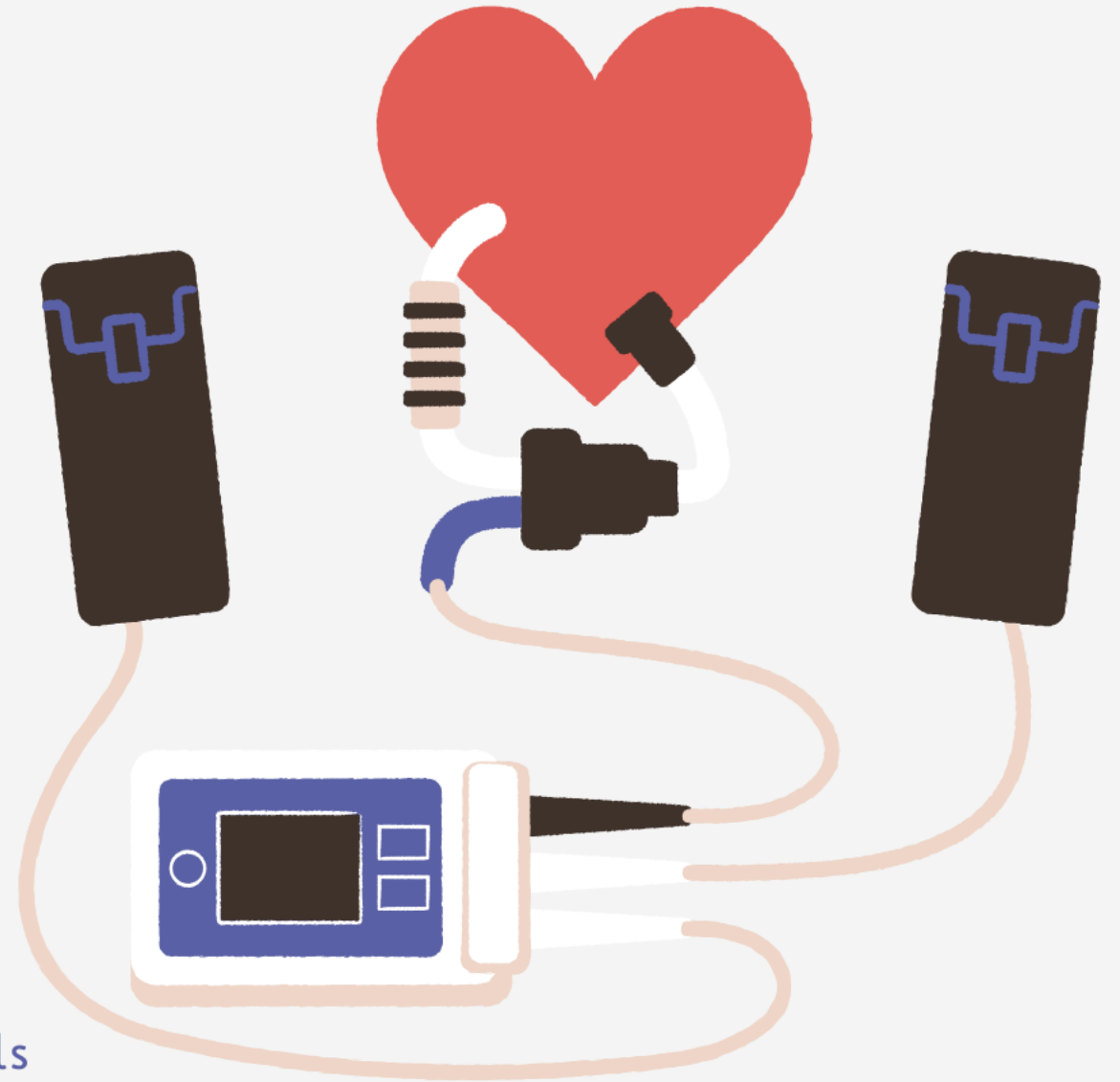


PROJECT ADAM

Heart Safe School District

Our experience in Jefferson County Schools





Step 1

Provide information and resources for nurses by using the Project ADAM heart safe schools curriculum



Step 2

Meet with administrative staff to introduce the importance of unified team, plan and timeline.



Step 3

Implement the plan by identifying a team, having a written plan and conducting drills.

Step 1

Project Adam Website

Connect with an affiliate. For Alabama contact:

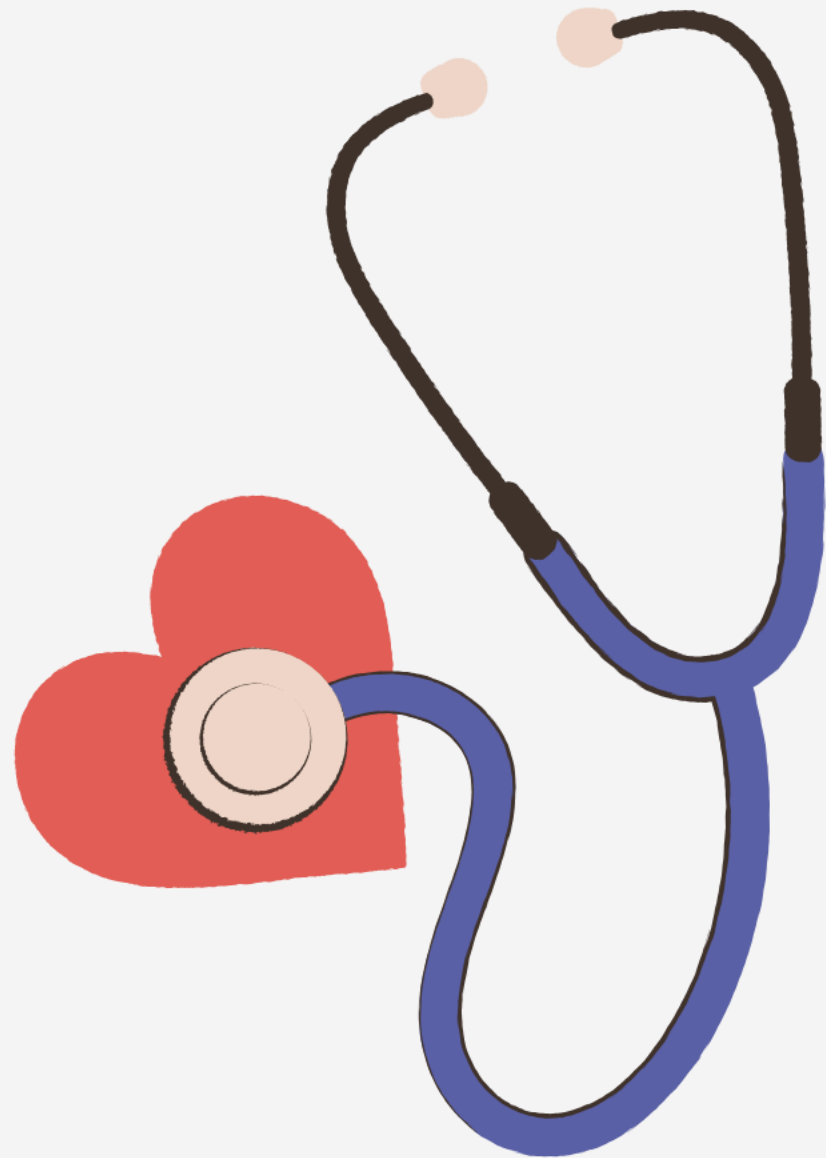
COA at alabamalifestart@childrensal.org

USA Health at projectadam@health.southalabama.edu

Connect with Vendors to borrow or purchase equipment:

Jefcoed partnered with GoRescue located in Homewood





Information for Nurses

Items needed:

- Manikin
- Radio/walkie
- AED trainer
- Phone
- AED drill checklist
- Stopwatch

**Meet with district
leaders and
administration**

Team effort

**Presentation used by
JEFCOED**

Step 2



School Emergencies

CERT or MERT TEAM

Establish a Code word to initiate the Cardiac or Medical emergency response team and communicate this with ALL staff



Work with Local Firestations and Paramedics

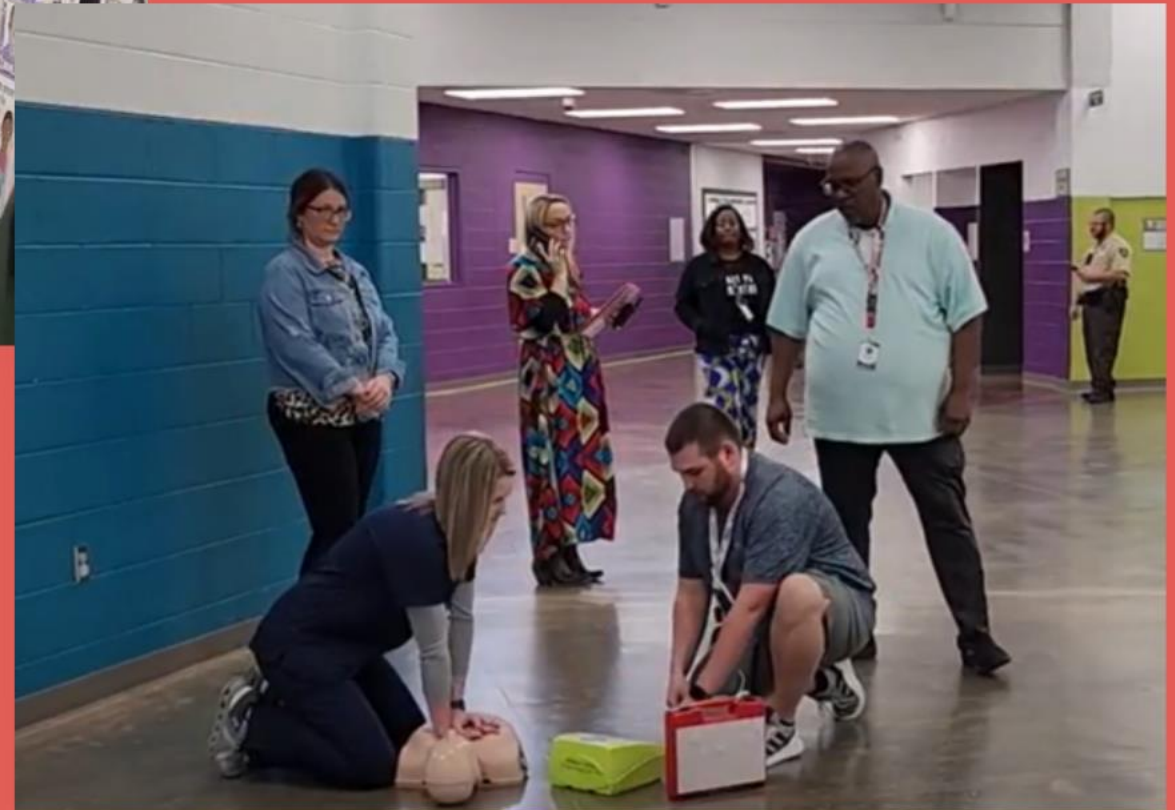


Thanks Irondale for being awesome



Drills at Adamsville and Bryant Park Elementary

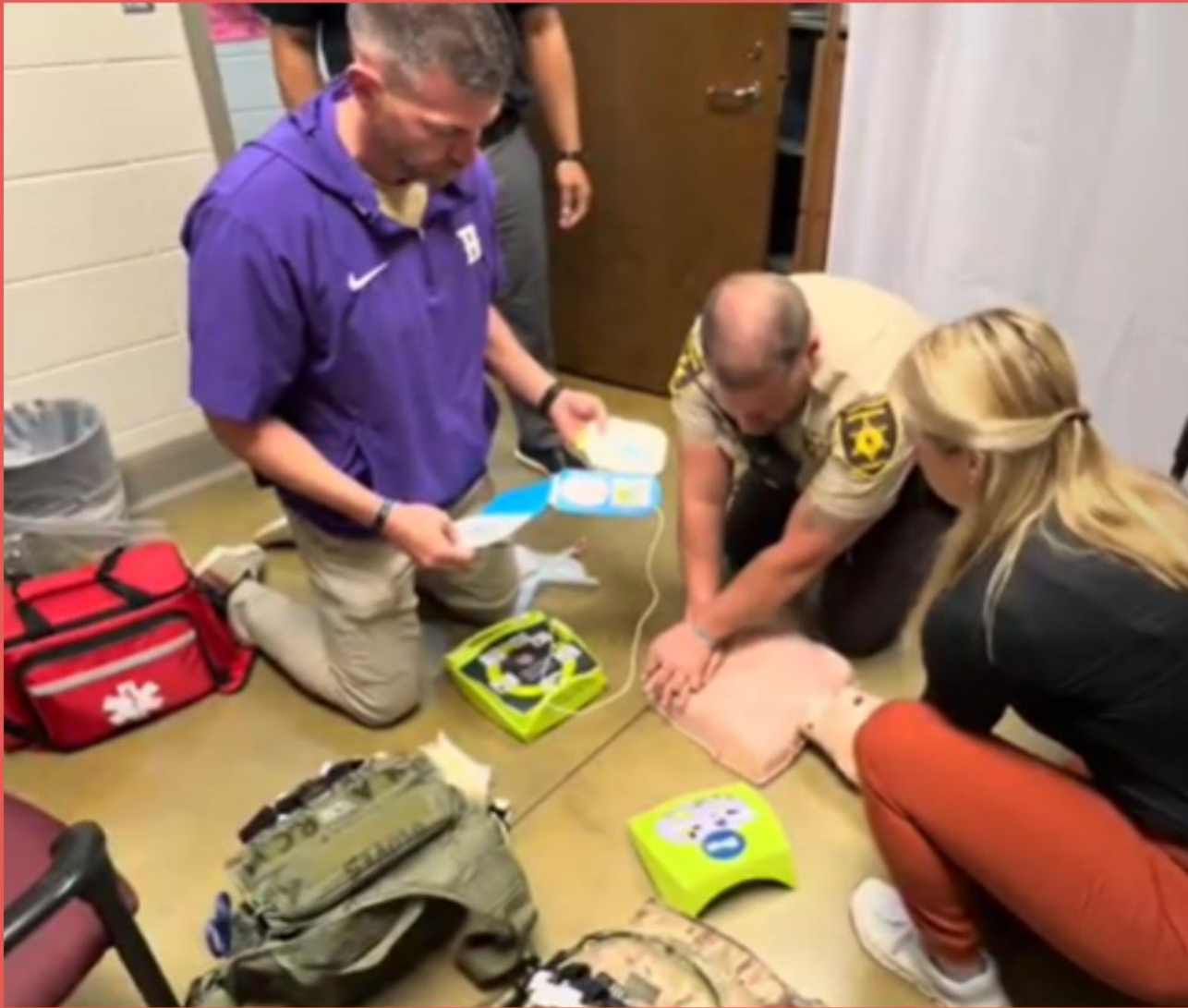
Various settings /scenerios





Following AED prompts at JCIB Middle School

CELLAR

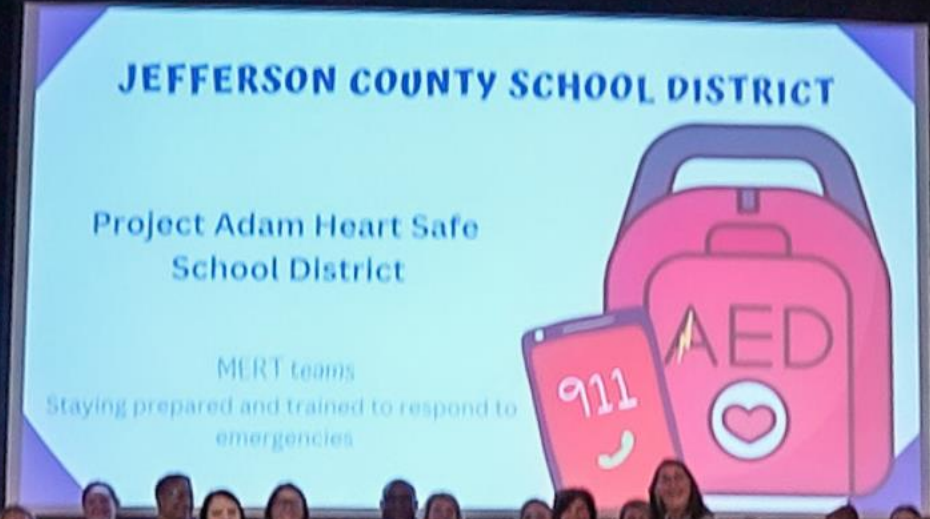


**Involving SRO and other
trained staff**





Jefferson County Schools



Heartsafe School District

Proudly Display
our banners



The WHY



SCA can strike anyone at anytime

Students

Jefferson County Schools have around 36,000 students on 57 campuses.



Staff

Staff not only includes teachers, but CNP, bus drivers/aides, maintenance and support staff.

Visitors

Visitors such as parents, grandparents, and vendors visit campuses on a daily basis.

Thank you!

For your time and attention

